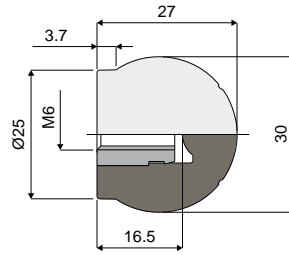
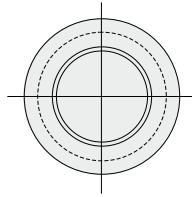


Knobs and handles

Part. 382 Ball handle



Code
382 / 84119

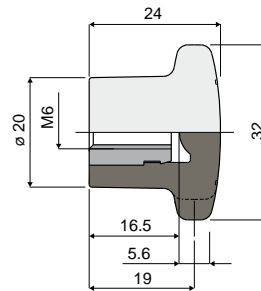
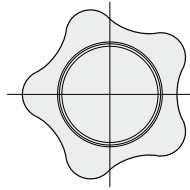
MATERIALS: Ball handle made of reinforced polyamide, black colour; threaded bushing in nickel plated brass.

BOX QUANTITY: 24 pieces.

ON REQUEST:

- Handles: Made in reinforced polypropylene, different colours.
- Box quantity: According to your request.

Part. 383 Knob



Code
383 / 84120

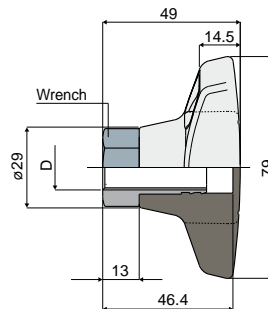
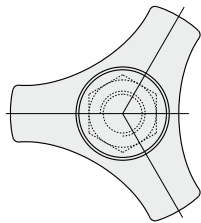
MATERIALS: Knob made of reinforced polyamide, black colour; threaded bushing in nickel plated brass.

BOX QUANTITY: 24 pieces.

ON REQUEST:

- Knobs: In reinforced polypropylene, other colours, with customized brand.
- Box quantity: According to your request.

Part. 350 Knob



D	Wrench	Code
M12	19	350 / 83398
M16	24	350 / 83399

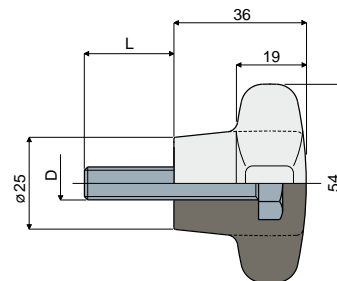
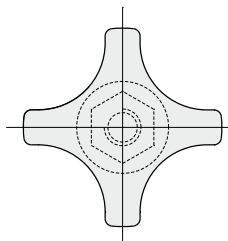
MATERIALS: Knob made of reinforced polyamide black colour; threaded bushing in nickel plated brass.

BOX QUANTITY: 24 pieces.

ON REQUEST:

- Knobs: In reinforced polypropylene, other colours, with customized brand.
- Box quantity: According to your request.

Part. 294 Knob for bracket (reinforced type)



D (mm)	L (mm)	Code
M8	22	294 / 82805
M10	22	294 / 82588

MATERIALS: Knob made of reinforced polyamide black colour; bolt made of stainless steel AISI 304.

FEATURES: Accessory to be used with head Part.223.

BOX QUANTITY: 24 pieces.

ON REQUEST:

- Knobs: Made of reinforced polypropylene, in other colours, with bolts of different length and diameter.
- Box quantity: According to your request.