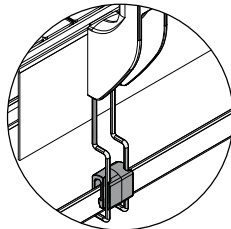
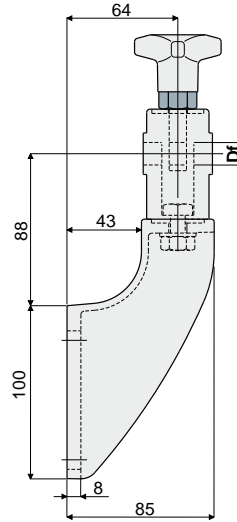
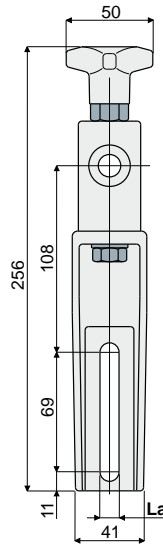


Guide rail brackets

Guide rail bracket (with adjustable high type head) Part. 280



Presetting for drip tray support (see on page 29)



| Df Bore for pin of (mm) | La (9 mm slot) Code | La (11 mm slot) Code |
|-------------------------------|------------------------|-------------------------|
| 12 | 280 / 82150 | 280 / 82127 |
| 14 | 280 / 82151 | 280 / 82128 |
| 16 | 280 / 82152 | 280 / 82129 |

MATERIALS: Bracket and knob made of reinforced polyamide black colour; hexagonal insert made of nickel plated brass; eyebolt, screw, nut and washers made of stainless steel AISI 304.

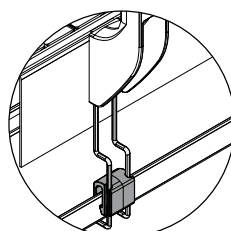
FEATURES: Max tightening torque 4 Kg·m.

BOX QUANTITY: 24 pieces.

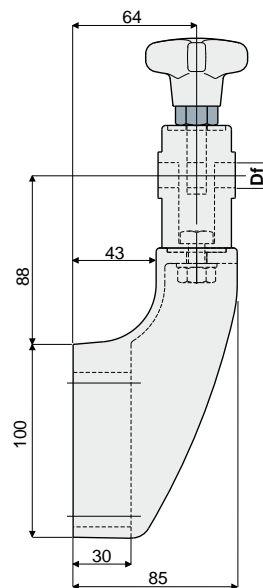
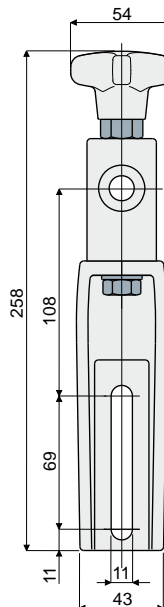
ON REQUEST:

- **Brackets:** In reinforced polypropylene, other colours.
- **Box quantity:** According to your request.

Guide rail bracket (reinforced type with adjustable high type head) Part. 281



Presetting for drip tray support (see on page 29)



| Df Bore for pin of (mm) | Code |
|-------------------------------|-------------|
| 12 | 281 / 82130 |
| 14 | 281 / 82131 |
| 16 | 281 / 82132 |

MATERIALS: Bracket and knob made of reinforced polyamide black colour; hexagonal insert made of nickel plated brass; eyebolt, screw, nut and washers made of stainless steel AISI 304.

FEATURES: To be used for heavy applications, suitable in conveyors with more ways, both in accumulation and curve. Max tightening torque 4 Kg·m.

BOX QUANTITY: 24 pieces.

ON REQUEST:

- **Brackets:** In reinforced polypropylene, other colours.
- **Box quantity:** According to your request.