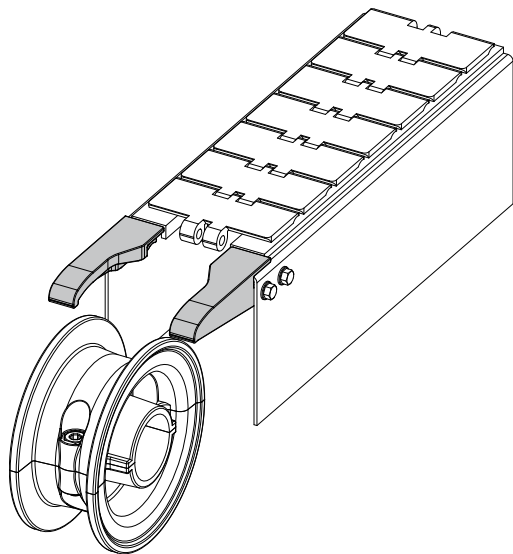


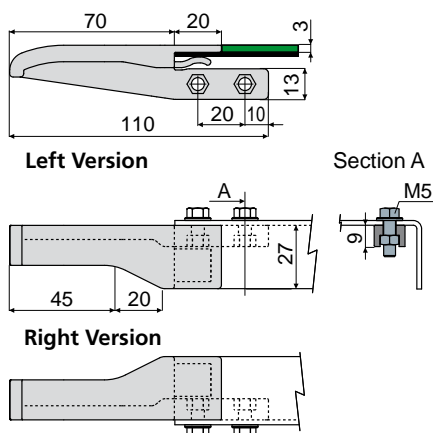
Chain guides and accessories

Example of application



Chain inlet guide shoe

Part. **519**



| Version | Code |
|--------------|-------------|
| Right | 519 / 87254 |
| Left | 519 / 87255 |
| Right + Left | 519 / 87256 |

MATERIALS: Shoe in black polyamide.

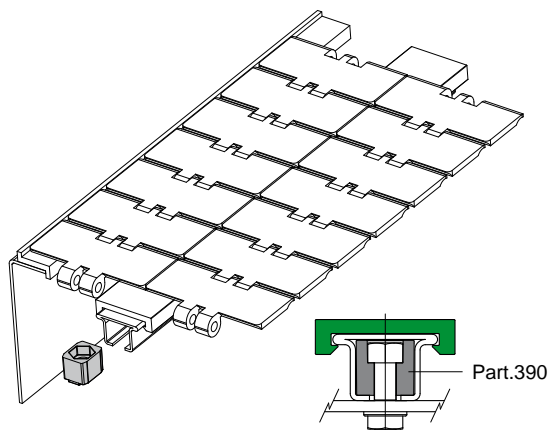
FEATURES: To be assembled near to the idler wheels to drive the chain on the transport guides.

BOX QUANTITY: 24 pieces.

ON REQUEST:

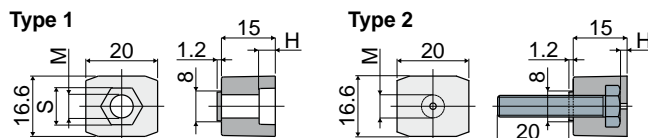
- Shoes: In various colours.
- Box quantity: According to your request.

Example of application



Mounting block for chain guide profile

Part. **390**



| Type 1 (without screw) | | | | Type 2 (with screw) | | | |
|------------------------|----|-----|----|---------------------|----|---|--|
| Code | M | H | S | Code | M | H | |
| 390 / 84166 | M6 | 4,5 | 10 | 390 / 87189 | M6 | 2 | |
| 390 / 84167 | M8 | 6 | 13 | | | | |

MATERIALS: Mounting block in reinforced polyamide, black colour; screw in stainless steel.

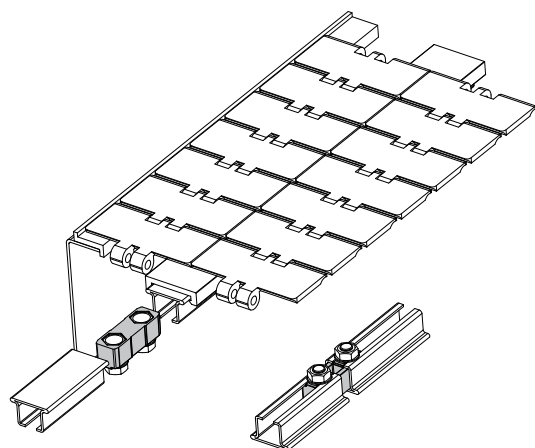
FEATURES: To be used for the guide fixing on the frame: Part.381, 384, 513 (excluding versions with aluminium metal profile).

BOX QUANTITY: 96 pieces.

ON REQUEST:

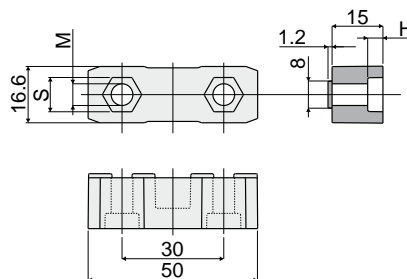
- Mounting blocks: In various colours.
- Box quantity: According to your request.

Example of application



Connecting block for chain guide profile

Part. **391**



| Code | M | H | S |
|-------------|----|-----|----|
| 391 / 84168 | M6 | 4,5 | 10 |
| 391 / 84169 | M8 | 6 | 13 |

MATERIALS: Connecting block in reinforced polyamide, black colour.

FEATURES: To be used to joint the guides: Part.381, 384, 513 (excluding versions with aluminium metal profile).

BOX QUANTITY: 48 pieces.

ON REQUEST:

- Connecting blocks: In various colours.
- Box quantity: According to your request.